

External Quality Assessment Scheme

Autoimmune diagnostics, IFA interpretation Round 1, 2023

Specimens

3 cases (digital images) in LabScala.

Background information

Sample S001

Endomysial antibodies (IgA): An 18-year-old male screened for endomysium IgA antibodies on primate liver section.

Sample S002

Anti-nuclear antibodies (ANA): A 44-year-old female with newly diagnosed SLE presenting with polyarthritis, lympho- and thrombocytopenia and central nervous system involvement.

Sample S003

Anti-nuclear antibodies (ANA): A 41-year-old male with inflammatory myositis and interstitial lung disease (ILD).

Examinations

IFA interpretation.

Use

Click on the image to enlarge it. Interpreted as patient samples.

Result reporting

Please enter the results via LabScala (www.labscala.com). Please note! The staining pattern "other" can be specified in the comment field. Report only the results of examinations that are in use in your laboratory. If you have any questions about the round, please contact the EQA Coordinator.

2023-05-02

INSTRUCTIONS

Product no. 5938
LQ718023011-013/FI

Subcontracting: Digital image services

The results should be reported no later than **May 25, 2023.**

Inquiries

EQA Coordinator
Kati Luiro
kati.luiro@labquality.fi

Labquality Oy

Kumpulantie 15
FI-00520 HELSINKI
Finland

Tel. + 358 9 8566 8200
Fax + 358 9 8566 8280

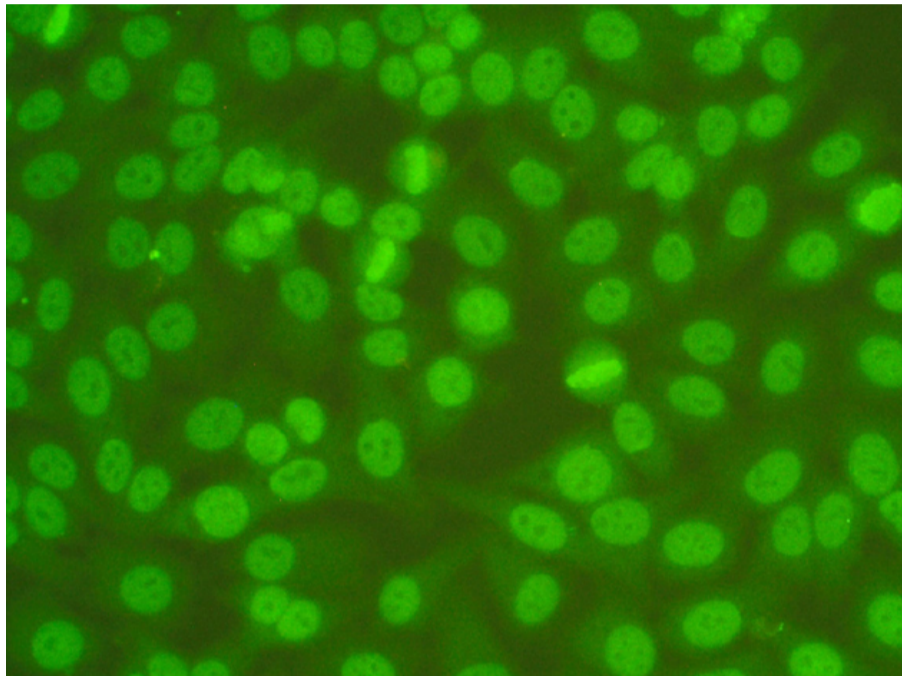
info@labquality.fi
www.labquality.com



Round	No of participants	No of responded participants	Response percentage %
Autoimmune diagnostics, IFA interpretation, May, 1-2023	20	20	100.00%

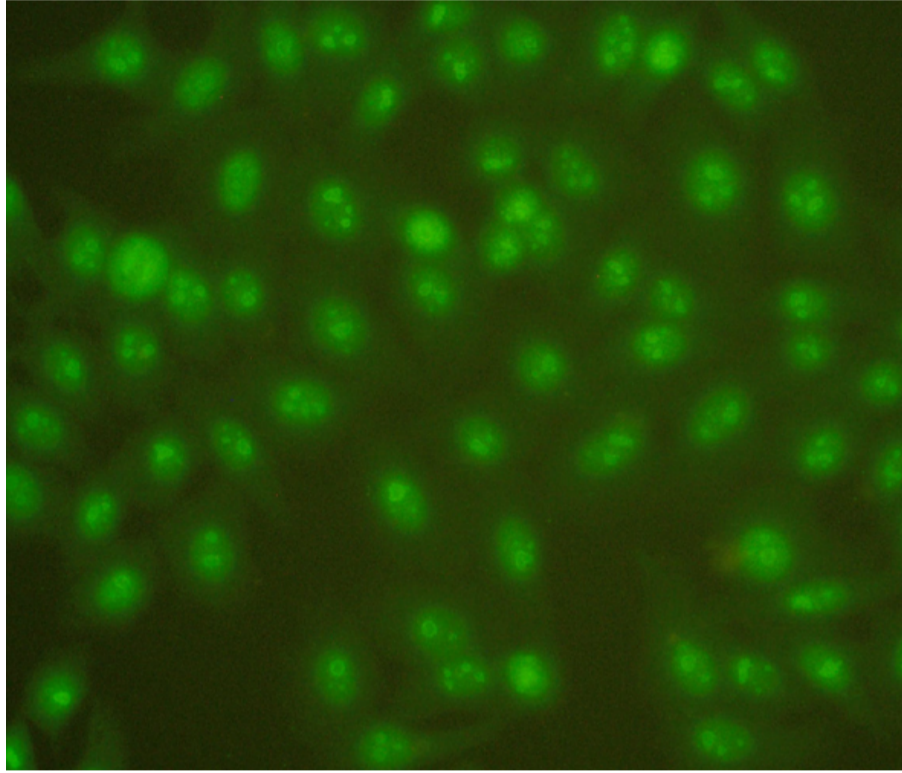
Sample S002

Method/cells used in laboratory	Homogenous	Speckled	Cytoplasmic	Mitotic pattern	Other
HEP-2 cells (Aesku Diagnostics)	1	-	-	-	-
HEP-2 cells (Euroimmun)	13	6	1	1	1
HEP-2 cells (Inova Diagnostics)	3	-	-	1	-
Other, specify in comments field	1	-	-	-	-
Total	18	6	1	2	1



Sample S003

Method/cells used in laboratory	Homogenous	Speckled	Nucleolar
HEP-2 cells (Aesku Diagnostics)	-	-	1
HEP-2 cells (Euroimmun)	1	1	15
HEP-2 cells (Inova Diagnostics)	-	-	3
Other, specify in comments field	-	-	1
Total	1	1	20



Report info**Participants**

20 participants from 8 countries.

Report info

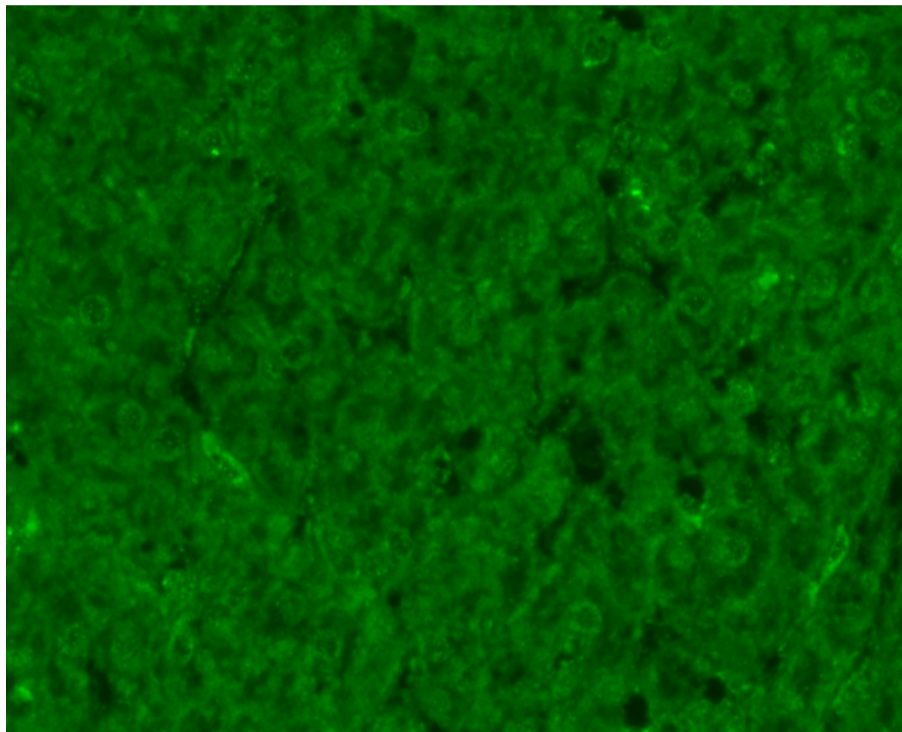
The results are divided into groups according to the method stated by the laboratory and presented in laboratory-specific tables. Accepted results are marked with green colour and laboratory's own result with a black radio button . If you have not reported any results you will get a note: "You have not responded in time, only global report is available." Always compare your results to those obtained with the same test method.

For information on report interpretation and performance evaluation, please see the "EQAS Interpretation guidelines" in LabScala User instructions. In case you have any questions regarding the reports, please contact the EOA Coordinator.

Round	No of participants	No of responded participants	Response percentage %
Autoimmune diagnostics, IFA interpretation, May, 1-2023	20	20	100.00%

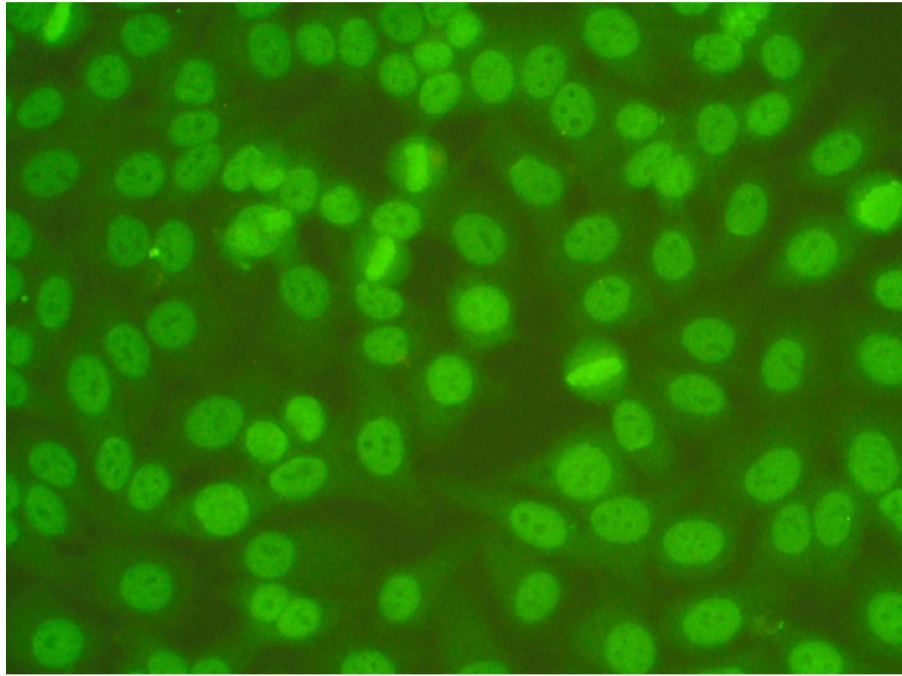
Sample S001

Method/cells used in laboratory	negative	Positive, 1:40	Positive, 1:160
Euroimmun EUROPLUS Endomysium / Gliadin (GAF-3X)	3	-	-
IFA (Euroimmun)	7	1	1
Menarini IF EMAbA	1	-	-
NOVA Lite IFA	2	-	-
Total	13	1	1



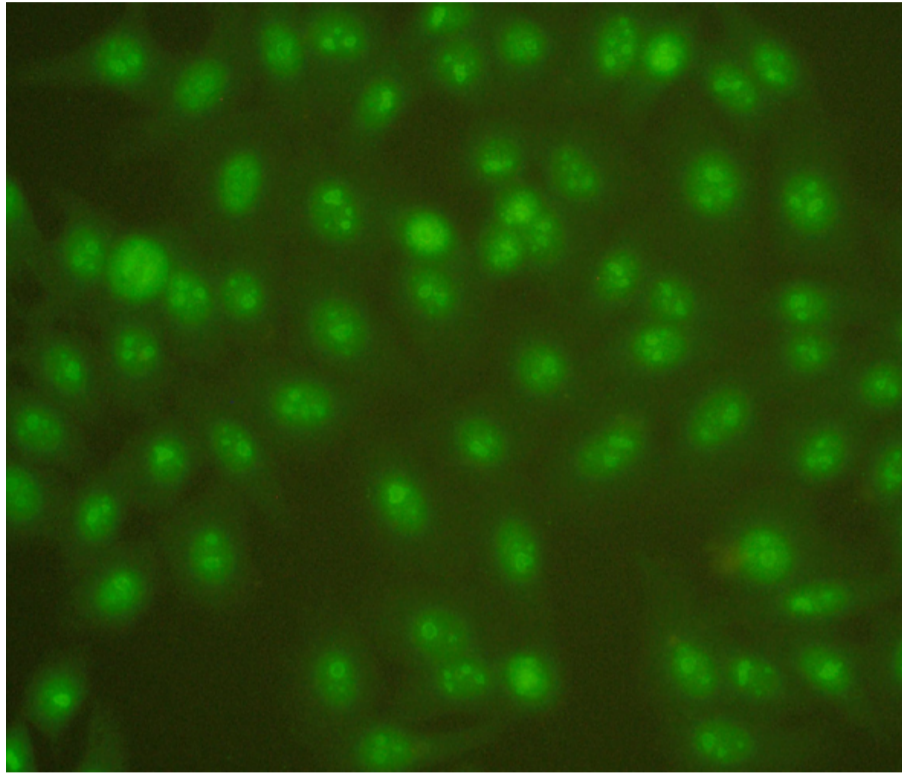
Sample S002

Method/cells used in laboratory	Homogenous	Speckled	Cytoplasmic	Mitotic pattern	Other
HEP-2 cells (Aesku Diagnostics)	1	-	-	-	-
HEP-2 cells (Euroimmun)	13	6	1	1	1
HEP-2 cells (Inova Diagnostics)	3	-	-	1	-
Other, specify in comments field	1	-	-	-	-
Total	18	6	1	2	1



Sample S003

Method/cells used in laboratory	Homogenous	Speckled	Nucleolar
HEP-2 cells (Aesku Diagnostics)	-	-	1
HEP-2 cells (Euroimmun)	1	1	15
HEP-2 cells (Inova Diagnostics)	-	-	3
Other, specify in comments field	-	-	1
Total	1	1	20



Report info**Participants**

20 participants from 8 countries.

Report info

The results are divided into groups according to the method stated by the laboratory and presented in laboratory-specific tables. Accepted results are marked with green colour and laboratory's own result with a black radio button . If you have not reported any results you will get a note: "You have not responded in time, only global report is available." Always compare your results to those obtained with the same test method.

For information on report interpretation and performance evaluation, please see the "EQAS Interpretation guidelines" in LabScala User instructions. In case you have any questions regarding the reports, please contact the EOA Coordinator.

External Quality Assessment Scheme

Autoimmune diagnostics, IFA interpretation Round 1, 2023

Specimens

Samples S001-S003 (LQ718023011-013) of this EQA round were 3 patient cases (digital images) in LabScala.

Report info

Please see the description of the data analysis on the last page of the laboratory-specific reports and global reports. It is important to read the Final report first, because it contains important information of the samples and results in each round.

Comments – EQA Coordinator

Two false positive results were reported for endomysial IgA antibody negative sample S001. All but two participants reported the expected homogenous staining pattern for sample S002. Some of the participants also reported other staining patterns in addition to the homogenous pattern. For sample S003, all participants reported the expected nucleolar staining pattern, and two other staining patterns were also reported.

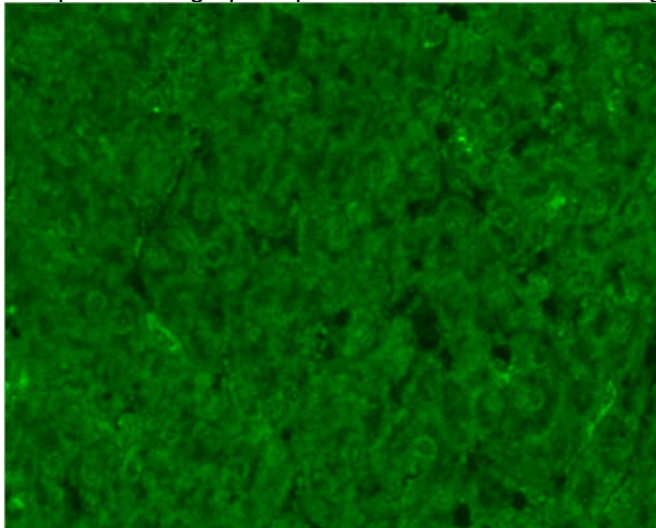
Comments - Expert

Sample S001 (LQ718023011)

Endomysial antibodies (IgA): An 18-year-old male screened for endomysium IgA antibodies on primate liver section.

Sample S001 (titre 1:10).

The photomicrograph depicts the titre used in screening.



Interpretation

Negative for endomysial IgA antibodies.

2023-05-29

FINAL REPORT

Product no. 5938

Subcontracting: Sample preparation
(digital images)

Samples sent 2023-05-02

Round closed 2023-05-25

Final report 2023-05-29

Request for correction

Typing errors in laboratory's result forms are on laboratory's responsibility. Labquality accepts responsibility only for result processing. Requests must be notified by writing within three weeks from the date of this letter.

Authorized by

EQA Coordinator

Kati Luiro

kati.luiro@labquality.fi

Expert

MD, PhD, Docent

Arno Hänninen,

Turku University Hospital

Turku, Finland

Labquality Oy

Kumpulantie 15

FI-00520 HELSINKI

Finland

Tel. + 358 9 8566 8200

Fax + 358 9 8566 8280

info@labquality.fi

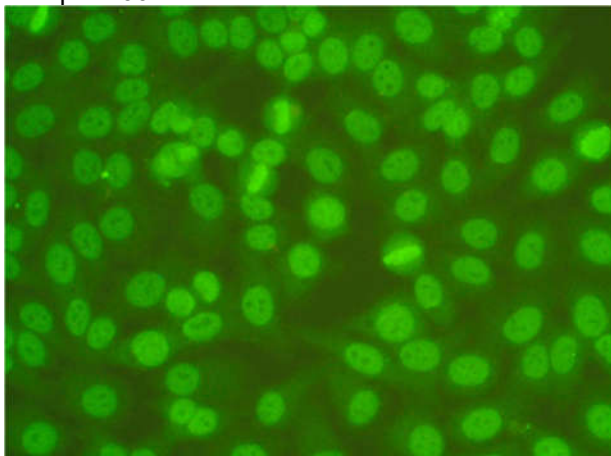
www.labquality.com



Sample S002 (LQ718023012)

Anti-nuclear antibodies (ANA): A 44-year-old female with newly diagnosed SLE presenting with polyarthritis, lympho- and thrombocytopenia and central nervous system involvement.

Sample S002



Interpretation

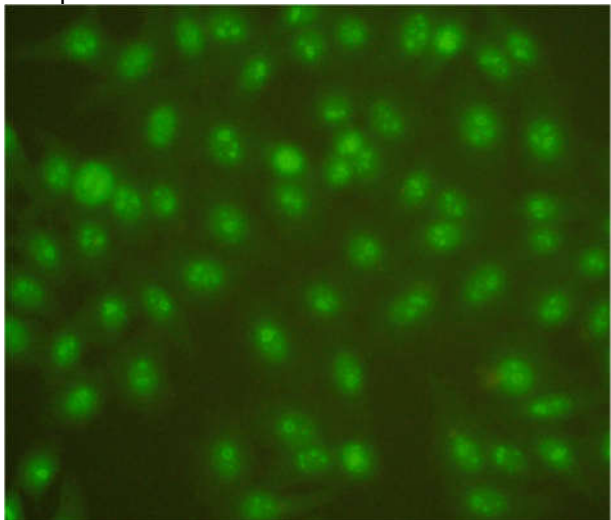
Pattern: Homogenous staining pattern (in the cells used as the substrate nucleoli remain negative).

ENA: Highly positive for nucleosome and histone autoantibodies and dsDNA, RNP, SmD, and Ribosomal P autoantibodies.

Sample S003 (LQ718023013)

Anti-nuclear antibodies (ANA): A 41-year-old male with inflammatory myositis and interstitial lung disease (ILD).

Sample S003



Interpretation

Pattern: Nucleolar staining (homogenous nucleolar).

ENA: Positive for PM/Sci100 and PM/Sci75 autoantibodies.

Exceptions

No exceptions.

End of report

Copyright © Labquality Oy.

Labquality does not permit any reproduction for commercial purposes of any portion of the material subject to this copyright. Labquality prohibits any use of its name, or reference to Labquality EQA program, or material in this report in any advertising, brochures or other commercial publications. Labquality EQA data do not necessarily indicate the superiority of instruments, reagents, testing equipment or materials used by participating laboratories. Use of Labquality EQA data to suggest superiority or inferiority of equipment or materials may be deceptive and misleading. Proficiency test results are handled confidentially. Labquality will not issue any statements to third parties of the performance of laboratories in external quality assessment schemes unless otherwise agreed.